

Image may be representation.
See specifications for product details.



XCZU2CG-2SFVC784I

Manufacturer Part Number	XCZU2CG-2SFVC784I
Manufacturer	AMD Xilinx
Allelco Part Number	32D-XCZU2CG-2SFVC784I
ECAD Model	Request Free CAD Models
Parts Description	IC SOC CORTEX-A53 784FCBGA
Package	784-BFBGA, FCBGA
Data sheet	XCZU2CG-2SFVC784I.pdf
RoHs Status	ROHS3 Compliant

Get a Quote

XCZU2CG-2SFVC784I - AMD.New Original in Stock. Download Linear Technology XCZU2CG-2SFVC784I datasheet/specifications on AllelcoElec.com.
Request a quote for XCZU2CG-2SFVC784I, please send us email: info@allelco.com

Specifications

XCZU2CG-2SFVC784I Tech Specifications
XCZU2CG-2SFVC784I - AMD technical specifications, attributes, parameters

Product Attribute	Attribute Value	Product Attribute	Attribute Value
Manufacturer	AMD Xilinx	Package	Tray
Supplier Device Package	784-FCBGA (23x23)	Operating Temperature	-40°C ~ 100°C (TJ)
Speed	533MHz, 1.3GHz	Number of I/O	252
Series	Zynq® UltraScale+™ MPSoC CG	Flash Size	-
RAM Size	256KB	Core Processor	Dual ARM® Cortex®-A53 MPCore™ with CoreSight™, Dual ARM®Cortex™-R5 with CoreSight™
Primary Attributes	Zynq®UltraScale+™ FPGA, 103K+ Logic Cells	Connectivity	CANbus, EBI/EMI, Ethernet, I²C, MMC/SD/SDIO, SPI, UART/USART, USB OTG
Peripherals	DMA, WDT	Base Product Number	XCZU2
Package / Case	784-BFBGA, FCBGA	Architecture	MCU, FPGA

Parts with Similar Specifications

The three parts on the right have similar specifications to AMD XCZU2CG-2SFVC784I

Product Attribute				
Part Number	XCZU2CG-2SFVC784I	XCZU27DR-2FFVG1517E	XCZU27DR-1FFVE1156I	XCZU27DR-2FFVE1156E
Manufacturer	AMD	Xilinx	Xilinx	Xilinx
Base Product Number	XCZU2	-	-	-
Connectivity	CANbus, EBI/EMI, Ethernet, I²C, MMC/SD/SDIO, SPI, UART/USART, USB OTG	-	-	-
Architecture	MCU, FPGA	-	-	-
Supplier Device Package	784-FCBGA (23x23)	-	-	-
RAM Size	256KB	-	-	-
Series	Zynq® UltraScale+™ MPSoC CG	*	*	*
Speed	533MHz, 1.3GHz	-	-	-
Primary Attributes	Zynq®UltraScale+™ FPGA, 103K+ Logic Cells	-	-	-
Operating Temperature	-40°C ~ 100°C (TJ)	-	-	-
Package	Tray	-	-	-
Package / Case	784-BFBGA, FCBGA	-	-	-
Flash Size	-	-	-	-
Core Processor	Dual ARM® Cortex®-A53 MPCore™ with CoreSight™, Dual ARM®Cortex™-R5 with CoreSight™	-	-	-
Number of I/O	252	-	-	-
Peripherals	DMA, WDT	-	-	-

XCZU2CG-2SFVC784I Datasheet PDF

Download XCZU2CG-2SFVC784I pdf datasheets and AMD documentation for XCZU2CG-2SFVC784I - AMD.

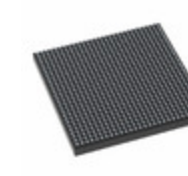
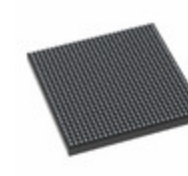
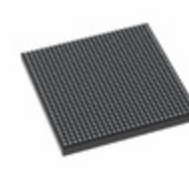
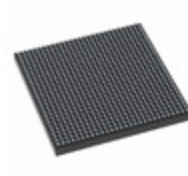
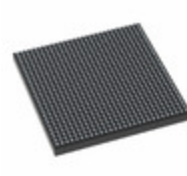
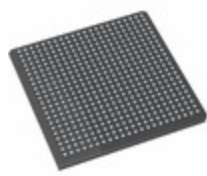
Environmental Information

[Xilinx REACH211 Cert.pdf](#)

Customers Also Interested in

Recommended Products

XCZU27DR-2FFVG1517E	XCZU27DR-1FFVE1156I	XCZU27DR-2FFVE1156E	XCZU2CG-1SFVC784E	XCZU2EG-2SFVC784I	XCZU2EG-2SFVC784E
Xilinx XCZU27DR-2FFVG1517E	Xilinx XCZU27DR-1FFVE1156I	Xilinx XCZU27DR-2FFVE1156E	AMD IC SOC CORTEX-A53 784FCBGA	AMD IC SOC CORTEX-A53 784FCBGA	AMD IC SOC CORTEX-A53 784FCBGA



XCZU2EG-L1SBVA484I

AMD
IC SOC CORTEX-A53 484FCBGA

XCZU2CG-2SFVC784E

AMD
IC SOC CORTEX-A53 784FCBGA

XCZU2CG-L1SFVC784I

AMD
IC SOC CORTEX-A53 784FCBGA

XCZU2EG-L1SFVC784I

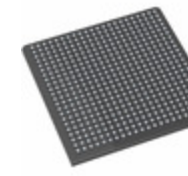
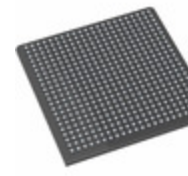
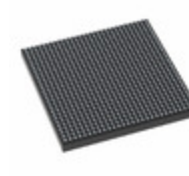
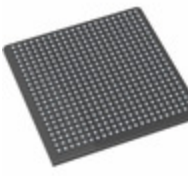
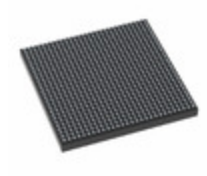
AMD
IC SOC CORTEX-A53 784FCBGA

XCZU2CG-1SFVC784I

AMD
IC SOC CORTEX-A53 784FCBGA

XCZU2EG-1SFVC784E

AMD
IC SOC CORTEX-A53 784FCBGA



XCZU2EG-L2SFVC784E

AMD
IC SOC CORTEX-A53 784FCBGA

XCZU27DR-2FFVG1517I

Xilinx
XCZU27DR-2FFVG1517I

XCZU2EG-3SBVA484E

AMD
IC SOC CORTEX-A53 484FCBGA

XCZU2EG-3SFVC784E

AMD
IC SOC CORTEX-A53 784FCBGA

XCZU2EG-1SBVA484E

AMD
IC SOC CORTEX-A53 484FCBGA

XCZU2CG-1SBVA484I

AMD
IC SOC CORTEX-A53 484FCBGA

Shipment

Delivery Time

In-stock items can be shipped within 24 hours. Some parts will be arranged for delivery within 1-2 days from the date all items arrive at our warehouse. And Allelco ships order once a day at about 17:00, except Sunday. Once the goods are shipped, the estimated delivery time depends on the shipping methods and Delivery destination. The table below shows are the logistic time for some common countries.

Delivery Cost

> Use your express account for shipment if you have one.

> Use our account for the shipment. Refer to the table below for the approximate charges.

(Different time frame / countries / package size has different price.)

Delivery Method

> Global Common Shipment by DHL / UPS / FedEx / TNT / EMS / SF we support.

> Others more shipping ways, please get in touch with your customer manager.

Common Countries Logistic Time Reference

Region	Country	Logistic Time(Day)
America	United States	5
	Brazil	7
Europe	Germany	5
	United Kingdom	4
	Italy	5
Oceania	Australia	6
	New Zealand	7
Asia	India	6
	Japan	7
Middle East	Israel	6

DHL & FedEx Shipment Charges Reference

Shipment charges(KG)	Reference DHL(USD\$)
0.00kg-1.00kg	USD\$60.00
1.00kg-2.00kg	USD\$70.00
2.00kg-3.00kg	USD\$80.00




Note: The above table is for reference only. There may have some data bias for the uncontrollable factors.
Contact us if you have any questions.

Payment Support


The payment method can be chosen from the methods shown below:
Wire Transfer (T/T, Bank Transfer), Western Union, Credit card, PayPal.



Your Faithful Supply Chain Partner -

 Efficient Supply Management
 Cost-Saving Procurement
 Fast Sourcing & Delivery

Contact us if you have any questions.

 Phone
 +00852 9146 4856
 Email
 info@allelco.com

Certifications & Memberships



[View More](#)



Contact us

Address: Flat/Rm C 13/F Harvard Commercial Building 105-111 Thomson Road, Wan Chai, Hong Kong
 Phone: +00852 9146 4856
 Fax: +00852 3010 8510
 Email: info@Allelco.com