



IFX20001MBV50

Manufacturer Part Number	IFX20001MBV50
Manufacturer	Infineon Technologies
Allelco Part Number	32D-IFX20001MBV50
ECAD Model	Request Free CAD Models
Parts Description	IFX20001 - LINEAR VOLTAGE REGULA
Package	6-SMD (5 Leads), Gull Wing
Data sheet	IFX20001MBV50.pdf



Get a Quote

IFX20001MBV50 - Infineon Technologies.New Original in Stock. Download Linear Technology IFX20001MBV50 datasheet/specifications on AllelcoElec.com.
Request a quote for IFX20001MBV50, please send us email: info@allelco.com

Specifications

IFX20001MBV50 Tech Specifications

IFX20001MBV50 - Infineon Technologies technical specifications, attributes, parameters

Product Attribute	Attribute Value	Product Attribute	Attribute Value
Manufacturer	Infineon Technologies	PSRR	60dB (100Hz)
Voltage Dropout (Max)	0.3V @ 20mA	Output Type	Fixed
Voltage - Output (Min/Fixed)	5V	Output Configuration	Positive
Voltage - Output (Max)	-	Operating Temperature	-40°C ~ 125°C (TJ)
Voltage - Input (Max)	45V	Number of Regulators	1
Supplier Device Package	PG-SCT595	Mounting Type	Surface Mount
Series	-	Current - Supply (Max)	4.5 mA
Protection Features	Over Current, Over Temperature, Reverse Polarity, Short Circuit	Current - Quiescent (Iq)	170 µA
Package / Case	6-SMD (5 Leads), Gull Wing	Current - Output	30mA
Package	Bulk	Control Features	Inhibit

Parts with Similar Specifications

The three parts on the right have similar specifications to Infineon Technologies IFX20001MBV50

Product Attribute				
Part Number	IFX20001MBV50	IFX1763LDV33XUMA1	IFX20002MBV50HTSA1	IFX20002MBV33HTSA1
Manufacturer	Infineon Technologies	Infineon Technologies	Infineon Technologies	Infineon Technologies
Voltage - Output (Min/Fixed)	5V	3.3V	5V	3.3V
Operating Temperature	-40°C ~ 125°C (TJ)	-40°C ~ 125°C	-40°C ~ 125°C	-40°C ~ 125°C
Current - Output	30mA	500mA	30mA	30mA
Voltage Dropout (Max)	0.3V @ 20mA	0.45V @ 500mA	0.3V @ 20mA	0.3V @ 20mA
Package	Bulk	Tape & Reel (TR)	Tape & Reel (TR)	Tape & Reel (TR)
Package / Case	6-SMD (5 Leads), Gull Wing	10-TFDFN Exposed Pad	6-SMD (5 Leads), Gull Wing	6-SMD (5 Leads), Gull Wing
Protection Features	Over Current, Over Temperature, Reverse Polarity, Short Circuit	Over Current, Over Temperature, Reverse Polarity	Over Current, Over Temperature, Reverse Polarity, Short Circuit	Over Current, Over Temperature, Reverse Polarity, Short Circuit
PSRR	60dB (100Hz)	65dB (120Hz)	60dB (100Hz)	60dB (100Hz)
Output Configuration	Positive	Positive	Positive	Positive
Supplier Device Package	PG-SCT595	PG-TSON-10	PG-SCT595-5	PG-SCT595-5-2
Voltage - Input (Max)	45V	20V	45V	45V
Control Features	Inhibit	Enable	Inhibit	Inhibit
Series	-	-	-	-
Output Type	Fixed	Fixed	Fixed	Fixed
Current - Supply (Max)	4.5 mA	31 mA	5.2 mA	5.2 mA
Voltage - Output (Max)	-	-	-	-
Current - Quiescent (Iq)	170 µA	60 µA	170 µA	170 µA
Number of Regulators	1	1	1	1
Mounting Type	Surface Mount	Surface Mount	Surface Mount	Surface Mount

Customers Also Interested in

Recommended Products



IFX1763LDV33XUMA1
Infineon Technologies
IC REG LINEAR 3.3V 500MA TSON-10



IFX21003TN V51
Cypress Semiconductor
(Infineon Technologies)



IFX20002MBV50HTSA1
Infineon Technologies
IC REG LINEAR 5V 30MA SCT595-5



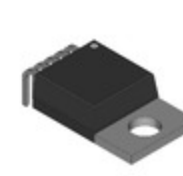
IFX20002MBV50H
Cypress Semiconductor
(Infineon Technologies)



IFX1763LDV
Cypress Semiconductor
(Infineon Technologies)



IFX1763LDV33
Cypress Semiconductor
(Infineon Technologies)



IFX1763XEJVCypress Semiconductor
(Infineon Technologies)**IFX21003**
Cypress Semiconductor
(Infineon Technologies)**IFX20002MBV33HTSA1**Infineon Technologies
IC REG LINEAR 3.3V 30MA SCT595-5**IFX20001MBV33**
Cypress Semiconductor
(Infineon Technologies)**IFX1763XEJ V**Cypress Semiconductor
(Infineon Technologies)**IFX20001MBV50H**
Cypress Semiconductor
(Infineon Technologies)**IFX20001MBV33HTSA1**Infineon Technologies
IC REG LINEAR 3.3V 30MA SCT595-5**IFX1763XEJV33**
Cypress Semiconductor
(Infineon Technologies)**IFX20002MBV33**Cypress Semiconductor
(Infineon Technologies)**IFX21004TN V51**
Cypress Semiconductor
(Infineon Technologies)**IFX21003TNV51**Infineon Technologies
IC REG LINEAR VOLTAGE REG**IFX1763XEJV50**
Cypress Semiconductor
(Infineon Technologies)

Shipment

Delivery Time

In-stock items can be shipped within 24 hours. Some parts will be arranged for delivery within 1-2 days from the date all items arrive at our warehouse. And Allelco ships order once a day at about 17:00, except Sunday. Once the goods are shipped, the estimated delivery time depends on the shipping methods and Delivery destination. The table below shows are the logistic time for some common countries.

Delivery Cost

> Use your express account for shipment if you have one.

> Use our account for the shipment. Refer to the table below for the approximate charges.

(Different time frame / countries / package size has different price.)

Delivery Method

> Global Common Shipment by DHL / UPS / FedEx / TNT / EMS / SF we support.

> Others more shipping ways, please get in touch with your customer manager.

Common Countries Logistic Time Reference		
Region	Country	Logistic Time(Day)
America	United States	5
	Brazil	7
Europe	Germany	5
	United Kingdom	4
	Italy	5
Oceania	Australia	6
	New Zealand	7
Asia	India	6
	Japan	7
Middle East	Israel	6

DHL & FedEx Shipment Charges Reference	
Shipment charges(KG)	Reference DHL(USD\$)
0.00kg-1.00kg	USD\$60.00
1.00kg-2.00kg	USD\$70.00
2.00kg-3.00kg	USD\$80.00




Note: The above table is for reference only. There may have some data bias for the uncontrollable factors.
Contact us if you have any questions.

Payment Support



The payment method can be chosen from the methods shown below:
Wire Transfer (T/T, Bank Transfer), Western Union, Credit card,
PayPal.



Your Faithful Supply Chain Partner -

 Efficient Supply Management
 Cost-Saving Procurement
 Fast Sourcing & Delivery

Contact us if you have any questions.

 Phone
+00852 9146 4856
 Email
info@allelco.com

Certifications & Memberships



[View More](#)



Contact us

Address: Flat/Rm C 13/F Harvard Commercial Building 105-111 Thomson Road, Wan Chai, Hong Kong

Phone: +00852 9146 4856

Fax: +00852 3010 8510

Email: info@Allelco.com

Copyright © 2012-2023 AllelcoElec.com. All rights reserved.