

Image may be representation.
See specifications for product details.



HMC557ALC4TR

| | |
|--------------------------|--|
| Manufacturer Part Number | HMC557ALC4TR |
| Manufacturer | Analog Devices, Inc. |
| Allelco Part Number | 32D-HMC557ALC4TR |
| ECAD Model | Request Free CAD Models |
| Parts Description | IC MIXER FUNDAMENTAL 24SMD |
| Package | 24-CLCC Exposed Pad |
| Data sheet | Cylindrical Battery Holders.pdf |
| RoHs Status | ROHS3 Compliant |

Get a Quote

HMC557ALC4TR - Analog Devices Inc..New Original in Stock. Download Linear Technology HMC557ALC4TR datasheet/specifications on AllelcoElec.com.
Request a quote for HMC557ALC4TR, please send us email: info@allelco.com

Specifications

HMC557ALC4TR Tech Specifications

HMC557ALC4TR - Analog Devices Inc. technical specifications, attributes, parameters

| Product Attribute | Attribute Value | Product Attribute | Attribute Value |
|-------------------------|----------------------|---------------------|-----------------|
| Manufacturer | Analog Devices, Inc. | Number of Mixers | 1 |
| Voltage - Supply | - | Noise Figure | 8.5dB |
| Supplier Device Package | 24-CLCC (3.9x3.9) | Mounting Type | Surface Mount |
| Series | - | Gain | - |
| Secondary Attributes | - | Frequency | 2.5GHz ~ 7GHz |
| RF Type | WiMax | Current - Supply | - |
| Package / Case | 24-CLCC Exposed Pad | Base Product Number | HMC557 |
| Package | Tape & Reel (TR) | | |

Parts with Similar Specifications

The three parts on the right have similar specifications to Analog Devices Inc. HMC557ALC4TR

| Product Attribute | | | | |
|-------------------------|---------------------|---------------------|-----------------------|-----------------------|
| Part Number | HMC557ALC4TR | HMC557ALC4 | HMC558LC3B | HMC558LC3BTR |
| Manufacturer | Analog Devices Inc. | Analog Devices Inc. | Analog Devices Inc. | Analog Devices Inc. |
| Base Product Number | HMC557 | HMC557 | HMC558 | HMC558 |
| Mounting Type | Surface Mount | Surface Mount | Surface Mount | Surface Mount |
| Series | - | - | - | - |
| RF Type | WiMax | WiMax | General Purpose | General Purpose |
| Secondary Attributes | - | - | Up/Down Converter | Up/Down Converter |
| Package | Tape & Reel (TR) | Strip | Strip | Tape & Reel (TR) |
| Current - Supply | - | - | - | - |
| Voltage - Supply | - | - | - | - |
| Gain | - | - | - | - |
| Number of Mixers | 1 | 1 | 1 | 1 |
| Package / Case | 24-CLCC Exposed Pad | 24-CLCC Exposed Pad | 12-VFCQFN Exposed Pad | 12-VFCQFN Exposed Pad |
| Noise Figure | 8.5dB | 8.5dB | 8.5dB | 8.5dB |
| Supplier Device Package | 24-CLCC (3.9x3.9) | 24-CLCC (3.9x3.9) | 12-CSMT (3x3) | 12-CSMT (3x3) |
| Frequency | 2.5GHz ~ 7GHz | 2.5GHz ~ 7GHz | 5.5GHz ~ 14GHz | 5.5GHz ~ 14GHz |

HMC557ALC4TR Datasheet PDF

Download HMC557ALC4TR pdf datasheets and Analog Devices Inc. documentation for HMC557ALC4TR - Analog Devices Inc..

Datasheets

Cylindrical Battery Holders.pdf

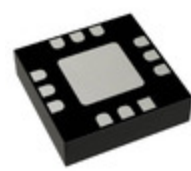
Customers Also Interested in

Recommended Products



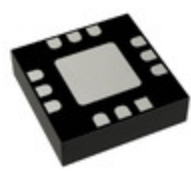
HMC557ALC4

Analog Devices Inc.
IC MIXER FUNDAMENTAL 24SMD



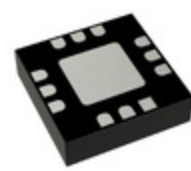
HMC558LC3B

Analog Devices Inc.
IC MIXER FUNDAMENTAL 12SMD



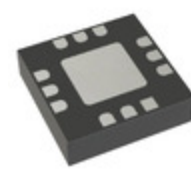
HMC558LC3BTR

Analog Devices Inc.
IC MIXER FUNDAMENTAL 12SMD



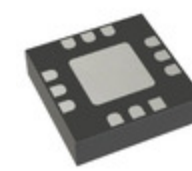
HMC554LC3BTR

Analog Devices Inc.
IC MMIC MIXER DBL-BAL 12SMD



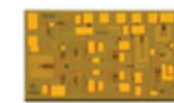
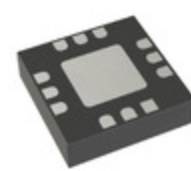
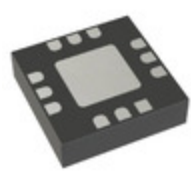
HMC558ALC3BTR

Analog Devices Inc.
IC MMIC MIXER DBL-BAL 12SMD



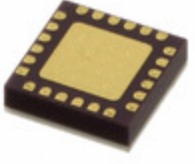
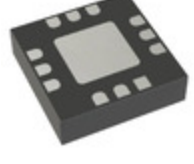
HMC554ALC3BTR

Analog Devices Inc.
IC MMIC MIXER DBL-BAL 12SMD

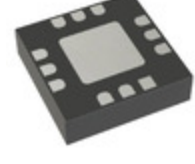


HMC558A

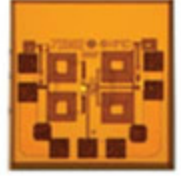
ADI (Analog Devices, Inc.)

**HMC557LC4TR**Analog Devices Inc.
IC MIXER FUNDAMENTAL 24SMD**HMC553AG**Analog Devices Inc.
MIXERS**HMC554ALC3B**Analog Devices Inc.
IC MMIC MIXER DBL-BAL 12SMD**HMC553ALC3BTR**Analog Devices Inc.
IC MMIC MIXER DBL-BAL 12SMD**HMC553ALC3BTR**Analog Devices Inc.
IC MMIC MIXER DBL-BAL 12SMD**HMC5551MS8GETR**

ADI (Analog Devices, Inc.)

**HMC553ALC3B**Analog Devices Inc.
IC MMIC MIXER DBL-BAL 12SMD**HMC558ALC3B**Analog Devices Inc.
IC MMIC MIXER DBL-BAL 12SMD**HMC5551MS8G**

Hittite (Analog Devices)

HMC5561Analog Devices Inc.
IC MULTI BB FREQ DIE**HMC558**Analog Devices Inc.
IC MMIC MIXER DBL-BAL DIE**Shipment****Delivery Time**

In-stock items can be shipped within 24 hours. Some parts will be arranged for delivery within 1-2 days from the date all items arrive at our warehouse. And Allelco ships order once a day at about 17:00, except Sunday. Once the goods are shipped, the estimated delivery time depends on the shipping methods and Delivery destination. The table below shows are the logistic time for some common countries.

Delivery Cost

> Use your express account for shipment if you have one.

> Use our account for the shipment. Refer to the table below for the approximate charges.

(Different time frame / countries / package size has different price.)

Delivery Method

> Global Common Shipment by DHL / UPS / FedEx / TNT / EMS / SF we support.

> Others more shipping ways, please get in touch with your customer manager.

| Common Countries Logistic Time Reference | | |
|--|----------------|--------------------|
| Region | Country | Logistic Time(Day) |
| America | United States | 5 |
| | Brazil | 7 |
| Europe | Germany | 5 |
| | United Kingdom | 4 |
| | Italy | 5 |
| Oceania | Australia | 6 |
| | New Zealand | 7 |
| Asia | India | 6 |
| | Japan | 7 |
| Middle East | Israel | 6 |

| DHL & FedEx Shipment Charges Reference | |
|--|----------------------|
| Shipment charges(KG) | Reference DHL(USD\$) |
| 0.00kg-1.00kg | USD\$60.00 |
| 1.00kg-2.00kg | USD\$70.00 |
| 2.00kg-3.00kg | USD\$80.00 |

Note: The above table is for reference only. There may have some data bias for the uncontrollable factors.

Contact us if you have any questions.

Payment Support

The payment method can be chosen from the methods shown below:

Wire Transfer (T/T, Bank Transfer), Western Union, Credit card, PayPal.

**Your Faithful Supply Chain Partner -**

Efficient Supply
Management



Cost-Saving
Procurement



Fast Sourcing &
Delivery

Contact us if you have any questions.



Phone

+00852 9146 4856



Email

info@allelco.com

Certifications & Memberships

[View More](#)

**Contact us**

Address: Flat/Rm C 13/F Harvard Commercial Building 105-111 Thomson Road, Wan Chai, Hong Kong

Phone: +00852 9146 4856

Fax: +00852 3010 8510

Email: info@Allelco.com

Copyright © 2012-2023 AllelcoElec.com. All rights reserved.