



Image may be representation.
See specifications for product details.



VBUS05B1-SD0-G4-08

Manufacturer Part Number	VBUS05B1-SD0-G4-08
Manufacturer	Vishay General Semiconductor – Diodes Division
Allelco Part Number	32D-VBUS05B1-SD0-G4-08
ECAD Model	PCB Symbol, Footprint & 3D Mode
Parts Description	TVS DIODE 5.5VWM 18VC CLP0603
Package	0201 (0603 Metric)
Data sheet	Cylindrical Battery Holders.pdf
RoHs Status	ROHS3 Compliant

Get a Quote

VBUS05B1-SD0-G4-08 - Vishay General Semiconductor - Diodes Division. New Original in Stock. Download Linear Technology VBUS05B1-SD0-G4-08 datasheet/specifications on AllelcoElec.com.
Request a quote for VBUS05B1-SD0-G4-08, please send us email: info@allelco.com

Specifications

VBUS05B1-SD0-G4-08 Tech Specifications
VBUS05B1-SD0-G4-08 - Vishay General Semiconductor - Diodes Division technical specifications, attributes, parameters

Product Attribute	Attribute Value	Product Attribute	Attribute Value
Manufacturer	Vishay General Semiconductor – Diodes Division	Package / Case	0201 (0603 Metric)
Voltage - Reverse Standoff (Typ)	5.5V (Max)	Package	Tape & Reel (TR)
Voltage - Clamping (Max) @ Ipp	18V	Operating Temperature	-55°C ~ 150°C (TJ)
Voltage - Breakdown (Min)	6V	Mounting Type	Surface Mount
Type	Zener	Current - Peak Pulse (10/1000µs)	2.5A (8/20µs)
Supplier Device Package	CLP0603	Capacitance @ Frequency	0.29pF @ 1MHz
Series	-	Bidirectional Channels	1
Power Line Protection	No	Base Product Number	VBUS05
Power - Peak Pulse	45W	Applications	General Purpose

Parts with Similar Specifications

The three parts on the right have similar specifications to Vishay General Semiconductor - Diodes Division VBUS05B1-SD0-G4-08

Product Attribute				
Part Number	VBUS05B1-SD0-G4-08	VBUS054DD-HF4-GS08	VBUS05L1-DD1-G-08	VBUS052CD-FAH-GS08
Manufacturer	Vishay General Semiconductor - Diodes Division	Vishay General Semiconductor - Diodes Division	Vishay General Semiconductor - Diodes Division	Vishay General Semiconductor - Diodes Division
Power - Peak Pulse	45W	57W	34W	63W
Package / Case	0201 (0603 Metric)	5-XDFN Exposed Pad	SOD-882	6-UDFN Exposed Pad
Supplier Device Package	CLP0603	LLP1010-5L	LLP1006-2M	LLP1713-7L
Power Line Protection	No	No	No	Yes
Voltage - Clamping (Max) @ Ipp	18V	19V	17V	5V
Current - Peak Pulse (10/1000µs)	2.5A (8/20µs)	3A (8/20µs)	2A (8/20µs)	3.5A (8/20µs)
Type	Zener	Zener	Zener	Steering (Rail to Rail)
Operating Temperature	-55°C ~ 150°C (TJ)	-40°C ~ 125°C (TJ)	-40°C ~ 125°C (TJ)	-40°C ~ 125°C (TJ)
Series	-	-	-	-
Capacitance @ Frequency	0.29pF @ 1MHz	-	0.33pF @ 1MHz	0.8pF @ 1MHz
Applications	General Purpose	General Purpose	General Purpose	HDMI
Voltage - Breakdown (Min)	6V	6.9V	7V	6.9V
Mounting Type	Surface Mount	Surface Mount	Surface Mount	Surface Mount
Base Product Number	VBUS05	VBUS054	VBUS05	VBUS052
Bidirectional Channels	1	-	1	-
Package	Tape & Reel (TR)	Tape & Reel (TR)	Tape & Reel (TR)	Tape & Reel (TR)
Voltage - Reverse Standoff (Typ)	5.5V (Max)	5V (Max)	5.5V (Max)	5V (Max)

VBUS05B1-SD0-G4-08 Datasheet PDF

Download VBUS05B1-SD0-G4-08 pdf datasheets and Vishay General Semiconductor - Diodes Division documentation for VBUS05B1-SD0-G4-08 - Vishay General Semiconductor - Diodes Division.

Datasheets

[Cylindrical Battery Holders.pdf](#)

Customers Also Interested in

Recommended Products



VBUS054DD-HF4-GS08
Vishay General Semiconductor - Diodes Division



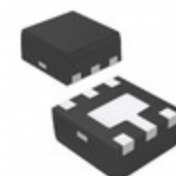
VBUS054CV-06S-G-08
Electro-Films (EFI) / Vishay



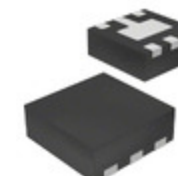
VBUS05L1-DD1-G-08
Vishay General Semiconductor - Diodes Division



VBUS052CD-FAH-GS08
Vishay General Semiconductor - Diodes Division



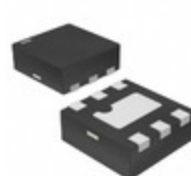
VBUS054B-HSF-GS08
Vishay General Semiconductor - Diodes Division



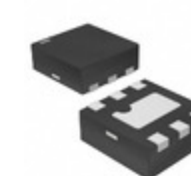
VBUS54CV-HSF-G4-08
Vishay General Semiconductor - Diodes Division

**VBUS051L1-DD1**

Electro-Films (EFI) / Vishay

**VBUS054CV-HS3-GS08**Vishay General Semiconductor - Diodes Division
TVS DIODE 5.5VWM 22VC LLP75-6A**VBUS051BD-HD1-GS08**Vishay General Semiconductor - Diodes Division
TVS DIODE 5VWM 16VC LLP1006-2L**VBUS054B-HS3-GS08**Vishay General Semiconductor - Diodes Division
TVS DIODE 5VWM 15VC LLP75-6A**VBUS54ED-FBL-G4-08**Vishay General Semiconductor - Diodes Division
TVS DIODE 5.5VWM 12V LLP2510-10L**VBUS054CD-FHI**

Electro-Films (EFI) / Vishay

**VBUS053AZ-HAF-GS08**Vishay General Semiconductor - Diodes Division
TVS DIODE 5.5VWM 18VC LLP75-7L**VBUS54GD-FBL-G3-08**Vishay General Semiconductor - Diodes Division
TVS DIODE 5.5VWM 15V LLP2510-10L**VBUS051CD-HD1-G-08**Vishay General Semiconductor - Diodes Division
TVS DIODE 5.5VWM 14VC LLP1006-2L**VBUS054CD-FHI-GS08**Vishay General Semiconductor - Diodes Division
TVS DIODE 5VWM 13VC LLP2513-11L**VBUS053CZ-HAF-G-08**Vishay General Semiconductor - Diodes Division
TVS DIODE 5.5VWM 18VC LLP75-7L

Shipment

Delivery Time

In-stock items can be shipped within 24 hours. Some parts will be arranged for delivery within 1-2 days from the date all items arrive at our warehouse. And Allelco ships order once a day at about 17:00, except Sunday. Once the goods are shipped, the estimated delivery time depends on the shipping methods and Delivery destination. The table below shows are the logistic time for some common countries.

Delivery Cost

> Use your express account for shipment if you have one.

> Use our account for the shipment. Refer to the table below for the approximate charges.

(Different time frame / countries / package size has different price.)

Delivery Method

> Global Common Shipment by DHL / UPS / FedEx / TNT / EMS / SF we support.

> Others more shipping ways, please get in touch with your customer manager.

Common Countries Logistic Time Reference

Region	Country	Logistic Time(Day)
America	United States	5
	Brazil	7
Europe	Germany	5
	United Kingdom	4
	Italy	5
Oceania	Australia	6
	New Zealand	7
Asia	India	6
	Japan	7
Middle East	Israel	6

DHL & FedEx Shipment Charges Reference

Shipment charges(KG)	Reference DHL(USD\$)
0.00kg-1.00kg	USD\$60.00
1.00kg-2.00kg	USD\$70.00
2.00kg-3.00kg	USD\$80.00

Note: The above table is for reference only. There may have some data bias for the uncontrollable factors.

Contact us if you have any questions.

Payment Support

The payment method can be chosen from the methods shown below:

Wire Transfer (T/T, Bank Transfer), Western Union, Credit card, PayPal.



Your Faithful Supply Chain Partner -



Efficient Supply Management



Cost-Saving Procurement



Fast Sourcing & Delivery

Contact us if you have any questions.



Phone

+00852 9146 4856



Email

info@allelco.com

Certifications & Memberships



[View More](#)



WWW.ALLELCOELEC.COM

Contact us

Address: Flat/Rm C 13/F Harvard Commercial Building 105-111 Thomson Road, Wan Chai, Hong Kong

Phone: +00852 9146 4856

Fax: +00852 3010 8510

Email: info@allelco.com